

# Issues, challenges and operationalization of the use of a collaborative approach towards vulnerable children: the exemple of the AIDES initiative

(Intersectorial Action for Child Development and Welfare)

**AIDES** in the original French

Claire Chamberland, principal researcher  
Danielle Lessard, coordonator  
Carl Lacharité, co-researcher

# Workshop Plan

- 1) The AIDES initiative: outcomes expected, objectives and means;
- 2) Implementation of the projet
- 3) Challenges and issues: exploring solutions

# AIDES : Outcomes expected

## FINAL OUTCOME

- ❖ To ensure children's safety, encourage their optimal development, and contribute to improving their future;

## INTERMEDIAIRE

- ❖ To support parents in the exercise of their parental role and responsibilities;

## PROXIMAL

- ❖ To encourage parents' participation and collaboration throughout the intervention/care process, particularly in decisions concerning the family;
- ❖ To promote a climate of cooperation and collaboration between all practioners.

# AIDES: Objectives

- ❖ An analysis of the child's developmental needs;
- ❖ A fully committed parent as partner;
- ❖ Collaborative process along all intervention stages;
  - A shared assessment of the situation;
  - Commun planning;
  - Implementation, follow-up and review.
- ❖ Collective responsibility for results.

# AIDES: Means

- ❖ British assessment framework
- ❖ CABE (children's needs analysis booklet)
- ❖ Participative approach
- ❖ Action plan

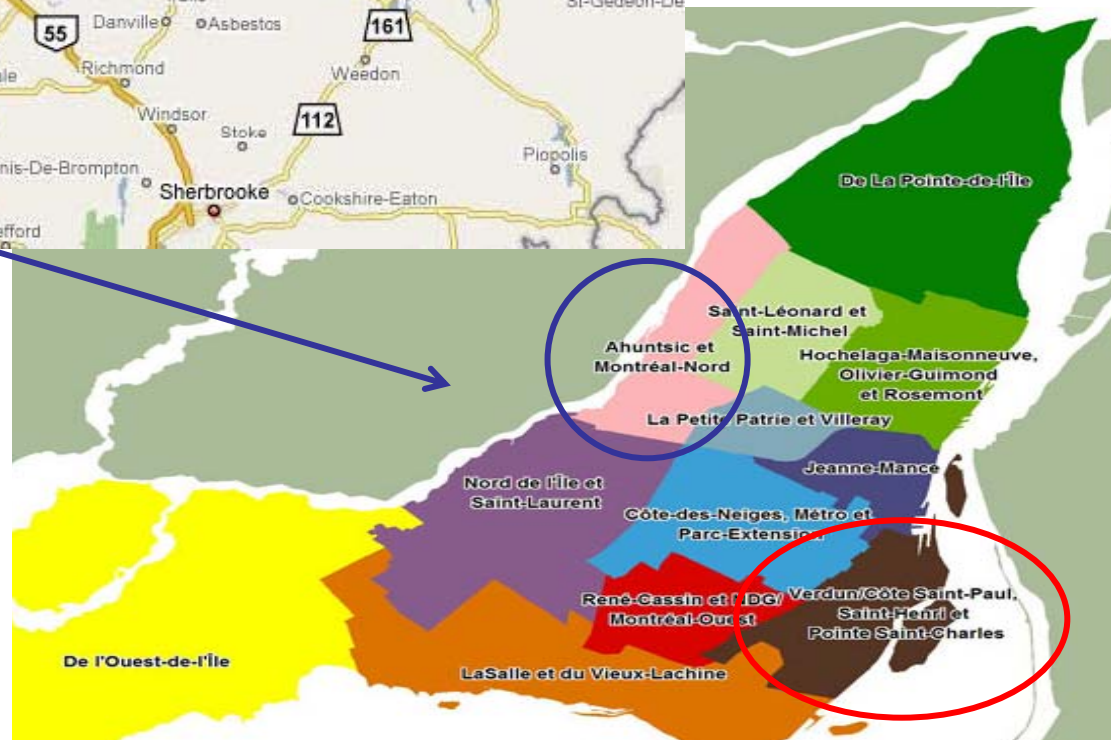
# The child and his family in the AIDES project

- ❖ Must be *under seven years old* at the beginning of the intervention;
- ❖ The family situation must have deteriorated sufficiently to warrant *significant concern about the child's development*, i.e., it is reported to Youth Protection System (CJ) or is a high-priority file at the health and social service agencies (CSSS);
- ❖ The child or his parents is/are receiving or will receive the services *of at least two establishments*;
- ❖ The chosen orientation is to keep the child in his natural milieu.

# Geographical situation of experimental and control territories for Montréal and Mauricie / Centre-du-Québec area



Experimental  
Control  
groups



2003 to 2008...until 2011

## DESIGN, TRY-OUT, AND IMPLEMENTATION

- ❖ Inventory of collaboration initiatives among vulnerable families (in Quebec and elsewhere)
- ❖ **Formation of a group for reflection, review**
  - Partners: case workers, managers, researchers (CJ and CSSS)
  - Activities (1 year): 4 meetings and 1 seminar with U.K. representatives
  - Objectives: appropriation of reference framework, joint construction of intervention procedure
  - Tasks:
    - ❖ Choice of means: Core assessment, participative approach with parents, ISP process
    - ❖ Adaptation to Quebec context: reference framework, CAGE
    - ❖ Creation of tools: small poster, series of charts
    - ❖ Construction of training content

2003 à 2008

## DESIGN, TRY-OUT, AND IMPLEMENTATION

- Agreements signed with the partners CJ Montreal/North and CSSS Ahuntsic/Montreal-North for the try-out period (objectives sought, roles and responsibilities).
- Creation of a local coordination committee
  - Awareness of the initiative: information and training sessions (2 days) and follow-up meetings
  - Test implementation among a few families in territory of CSSS Ahuntsic/Montréal-Nord (2006)
  - Meeting with service providers to know their points of view
  - Enhancement of material and support activities
- Simultaneously in the Mauricie / Centre-du-Québec area - promoting the approach in the assessment framework of PAPFC

2003 to 2008...until 2011

## DESIGN, TRY-OUT, and IMPLEMENTATION

of the initiative... but **also a research project** (n=230 participants)

- ❖ Adhesion of the different milieus (implementation and assessment)
- ❖ Formation of advisory and assessment committees
- ❖ Ethical approval (university and practitioner milieus)
- ❖ Identification of service providers (information and awareness activities concerning the initiative)
  - 1) *Support the use of the reference framework and the CAFE in the analysis of the child's needs.*
  - 2) *Encourage development of competencies linked to the participative approach in follow-up with families.*
  - 3) *Involve network partners in the child's case and update the ISP.*
- ❖ Recruitment of families
- ❖ Evaluation of the implementation and effects (pre- and post-test)

2003 to 2008...until 2011

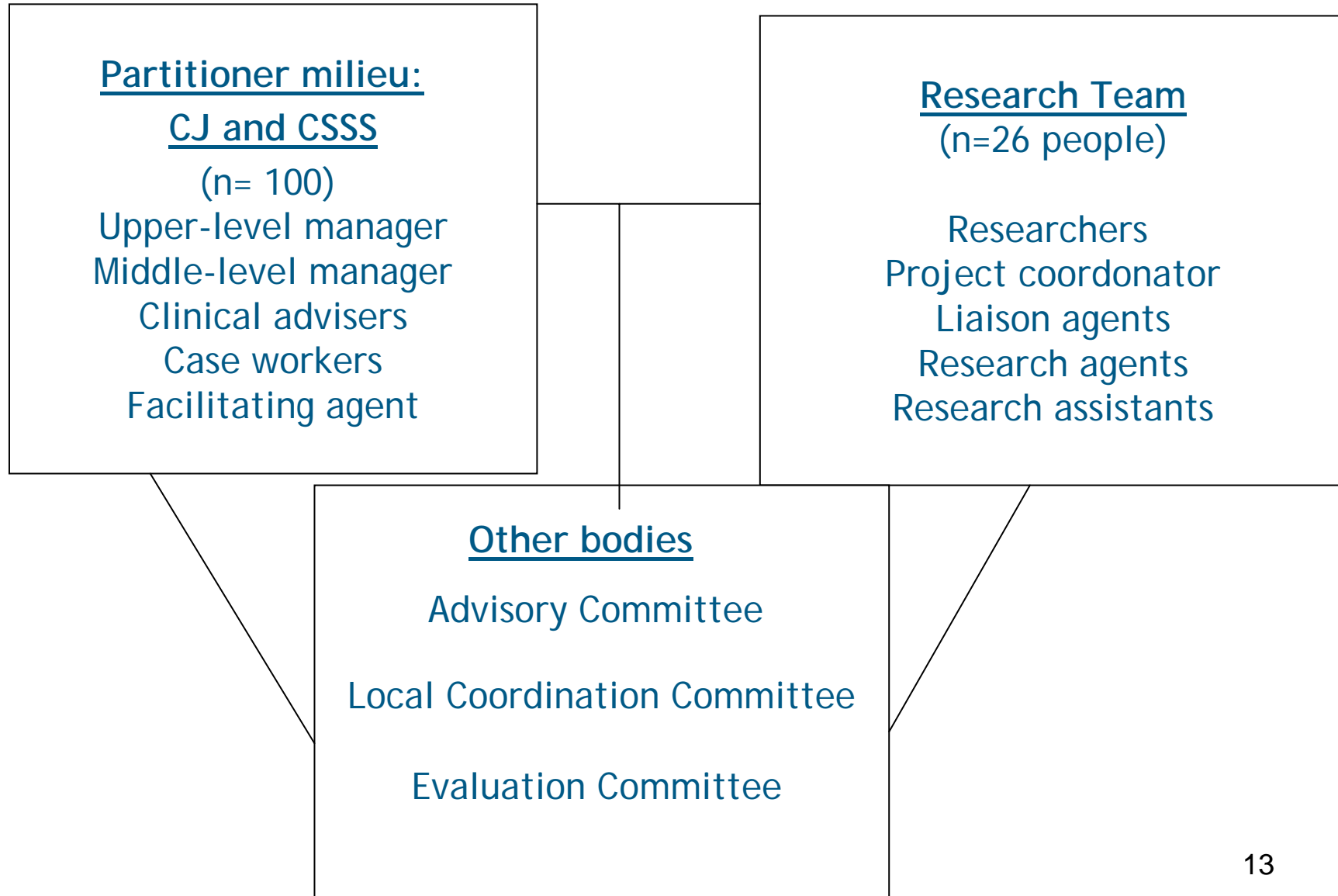
CONCEPTION, TRY-OUT AND IMPLEMENTATION

MONTREAL	MAURICIE/CENTRE-DU-QUÉBEC
<p data-bbox="291 329 883 432"><u>Experimental Group</u> (55 children and their families)</p> <p data-bbox="354 511 820 614">Youth protection system (Montreal/North)</p> <p data-bbox="277 696 896 785">Health and social service agency (Ahuntsic/Montreal-North)</p>	<p data-bbox="1148 329 1740 432"><u>Experimental group</u> (60 children and their families)</p> <p data-bbox="1210 511 1677 556">Youth protection system</p> <p data-bbox="1052 696 1835 785">Health and social service agencies (Énergie, Drummond, Arthabaska-Érable)</p>
<p data-bbox="291 829 883 932"><u>Control Group</u> (55 children and their families)</p> <p data-bbox="354 1011 820 1113">Youth protection system (Montreal/West)</p> <p data-bbox="277 1196 896 1285">Health and social service agency (South-West Verdun)</p>	<p data-bbox="1148 829 1740 932"><u>Control Group</u> (60 children and their families)</p> <p data-bbox="1210 1011 1677 1056">Youth protection system</p> <p data-bbox="1052 1168 1835 1313">Health and social service agencies (Nicolet/Bécancour, Trois-Rivières / Cap-de-la-Madeleine, Maskinongé)</p>

# Assessment/Review of the implementation of the AIDES initiative and its effects

		Pre-test	Stages of intervention	Post-test	
<b>Implementation/process evaluation</b>		<p><b><u>Characteristics of the children and their family situations</u></b></p> <p>Target group n=115 children/families Peer group N=115 children/families</p>	<p><b>Centering on the child's needs</b> Analysis of child's case</p> <p>Target group n=20 cases Peer group n=20 cases</p>	<p><b>Participation/collaboration</b> Telephone interviews</p> <p>Target group n=20 parents Peer group n=20 parents</p> <p>Target group = 15 service providers Peer group = 15 service providers</p>	<p><b><u>Characteristics of the children and their family situations</u></b></p> <p>Target group N ≥100 children/families Peer group N ≥ 100 children/families</p>
		<p><b><u>Practice conditions</u></b> Telephone interviews Target group n=15 service providers Peer group n=15 service providers <b>Focus group</b> Target group n=4 Focus group (8-12 people per focus group)</p>			
		Pre-test	Stages of intervention	Post-test	
<b>Impact evaluation</b>	<b><u>Proximate</u></b>		<p><b>Parental perceptions</b></p> <ul style="list-style-type: none"> <li>- quality of aid practices employed by pivot service provider</li> <li>- quality of collaboration with pivot service provider</li> <li>- degree of control in decisions regarding services for their child and his/her family</li> </ul> <p><b><u>Parent questionnaire</u></b> Target group n=115 parents Peer group n = 115 parents</p>		
	<b><u>Intermediary and ultimate</u></b>	<p>-Development of child -Victimization of child -Adaptation to parental role and exercise of parental responsibilities -Family environment</p> <p>Target group n=115 children/families Peer group N=115 children/families</p>		<ul style="list-style-type: none"> <li>- Development of child</li> <li>- Victimization of child</li> <li>- Adaptation to parental role and exercise of parental responsibilities</li> <li>- Family environment</li> </ul> <p>Target group N ≥100 children/families Peer group N ≥ 100 children/families</p>	

# The actors in the AIDES project (target group)



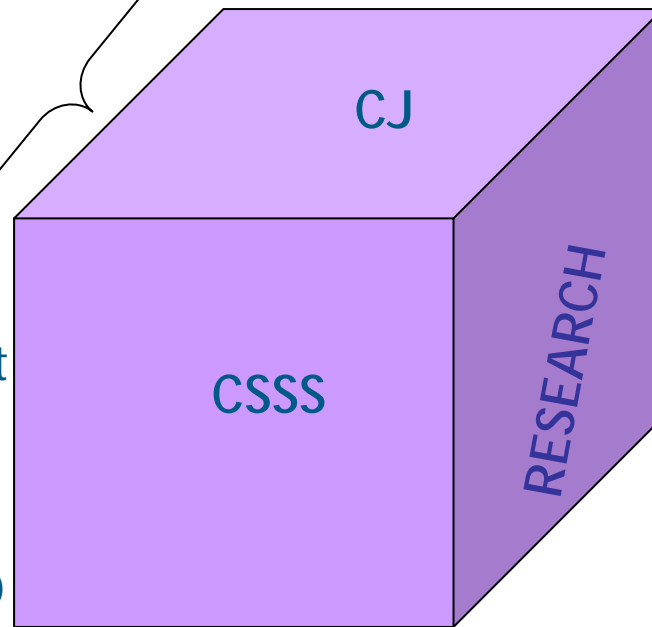
# Challenges and issues

Chosen approach  
in harmony with AIDES

Raise interest among  
case workers and  
accompany them

AIDES training

Asset: facilitating agent  
(Montréal),  
clinical counselor  
and PAPFC programm  
(Mauricie / Centre-du-Québec)



Support chosen  
approach

Gather research data

Conciliate deadlines

Population-oriented approach

Missing element in tools

Asset: EIJ coordonator (Montréal)  
PAPFC programm (Mauricie / Centre-du-Québec)

# Challenges and issues

## Establishing the link between the AIDES approach and institutional goals

- Empowerment and mobilization of parents;
- Relational/relation authority approach;
- Collaboration with network partners;
- Carrying out the PI and the PSI
- Evaluation of families' needs and best practices

### Other challenges...

- Providing the services once the needs are identified;
- Widening the partnership to the community network;
- Looking after the base of the triangle.

# To join us

Claire Chamberland  
[claire.chamberland@umontreal.ca](mailto:claire.chamberland@umontreal.ca)

Danielle Lessard  
[danielle.lessard@umontreal.ca](mailto:danielle.lessard@umontreal.ca)

Carl Lacharité  
[Carl.Lacharite@uqtr.ca](mailto:Carl.Lacharite@uqtr.ca)